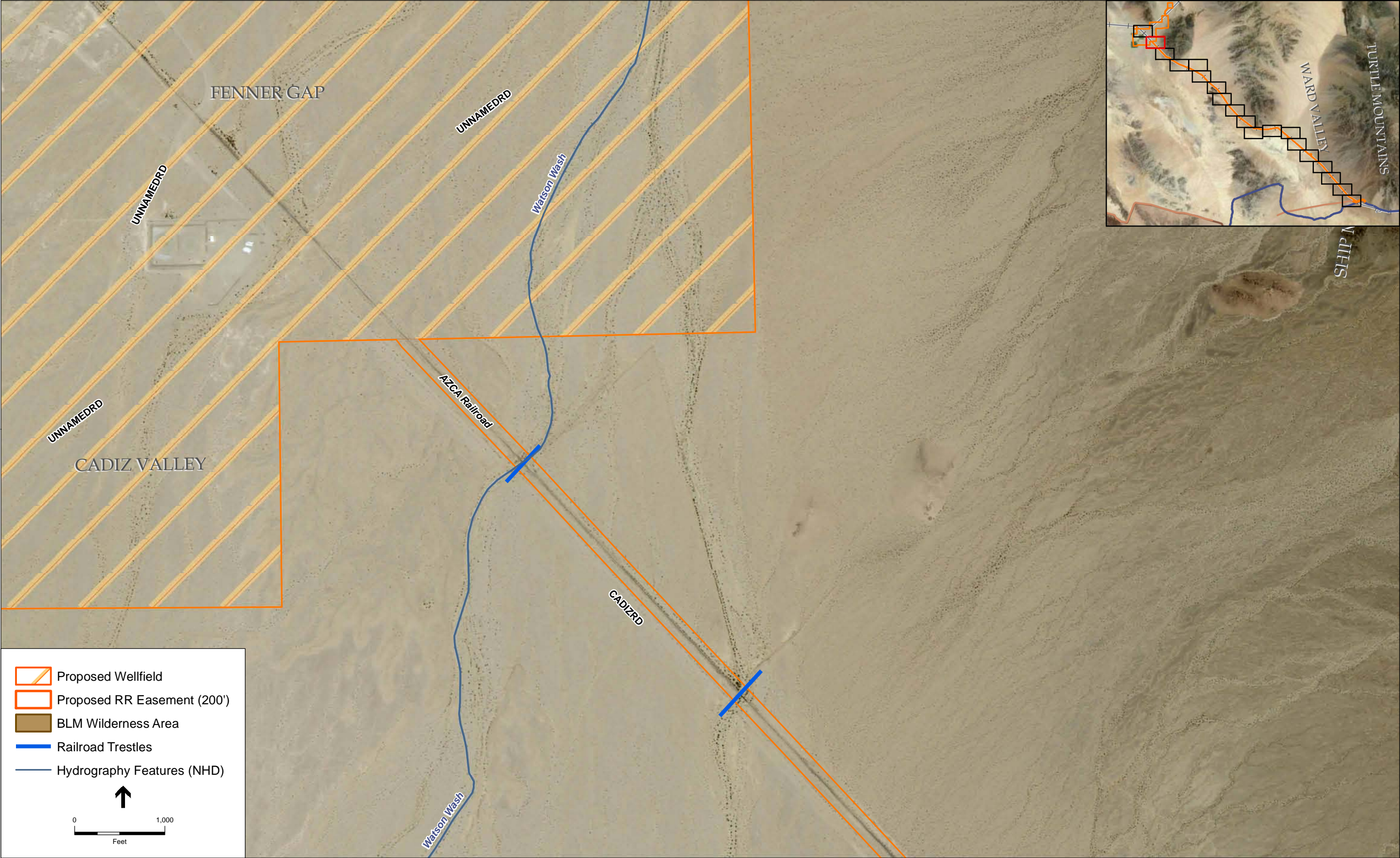


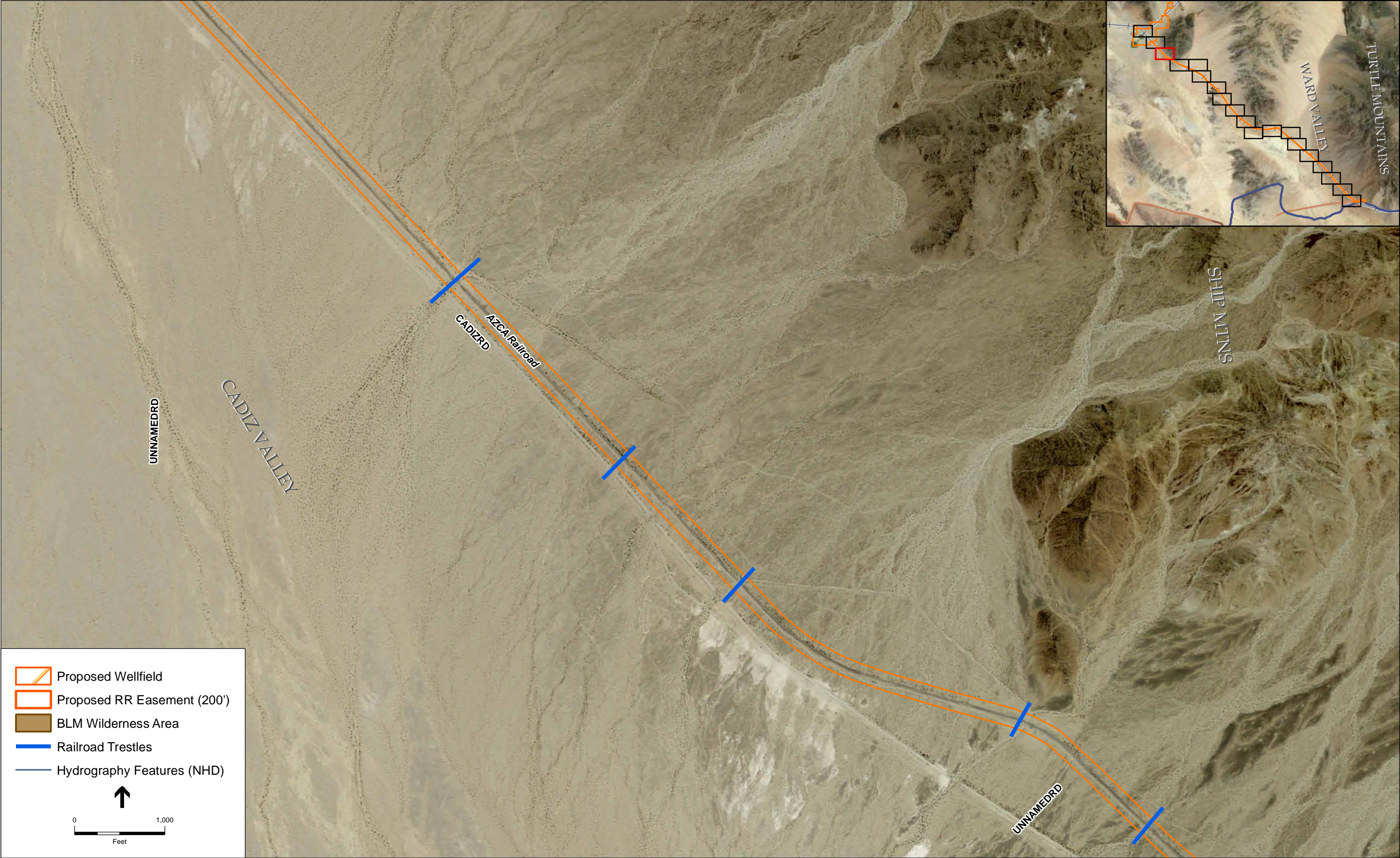
Appendix C

Pipeline Alignment Map Book





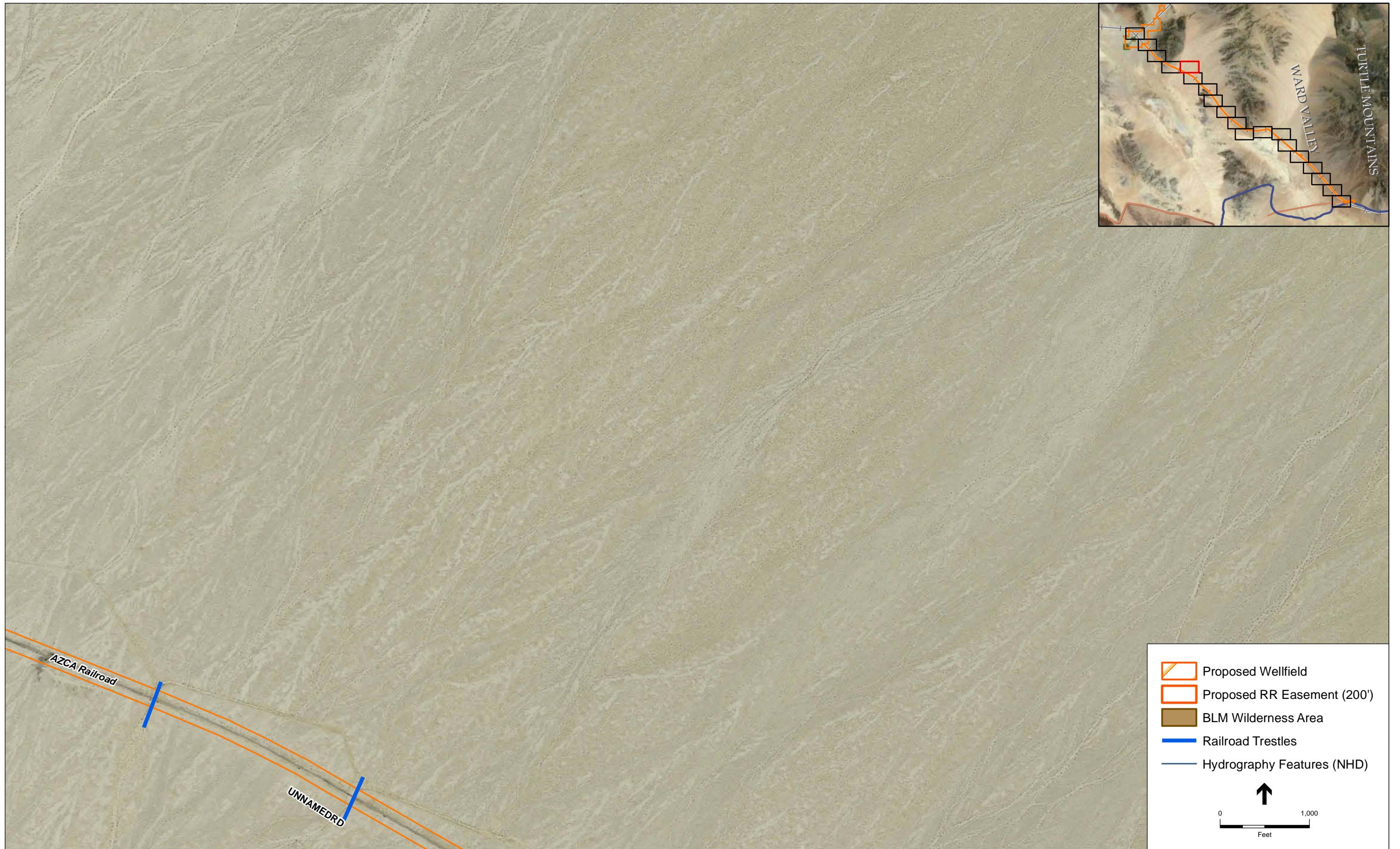




SOURCE: USDA, 2009; Geoscience Support Services, 2010, San Bernardino Co., 2010; Cadiz, Inc., 2010; and ESA, 2010



SOURCE: USDA, 2009; Geoscience Support Services, 2010, San Bernardino Co., 2010; Cadiz, Inc., 2010; and ESA, 2010



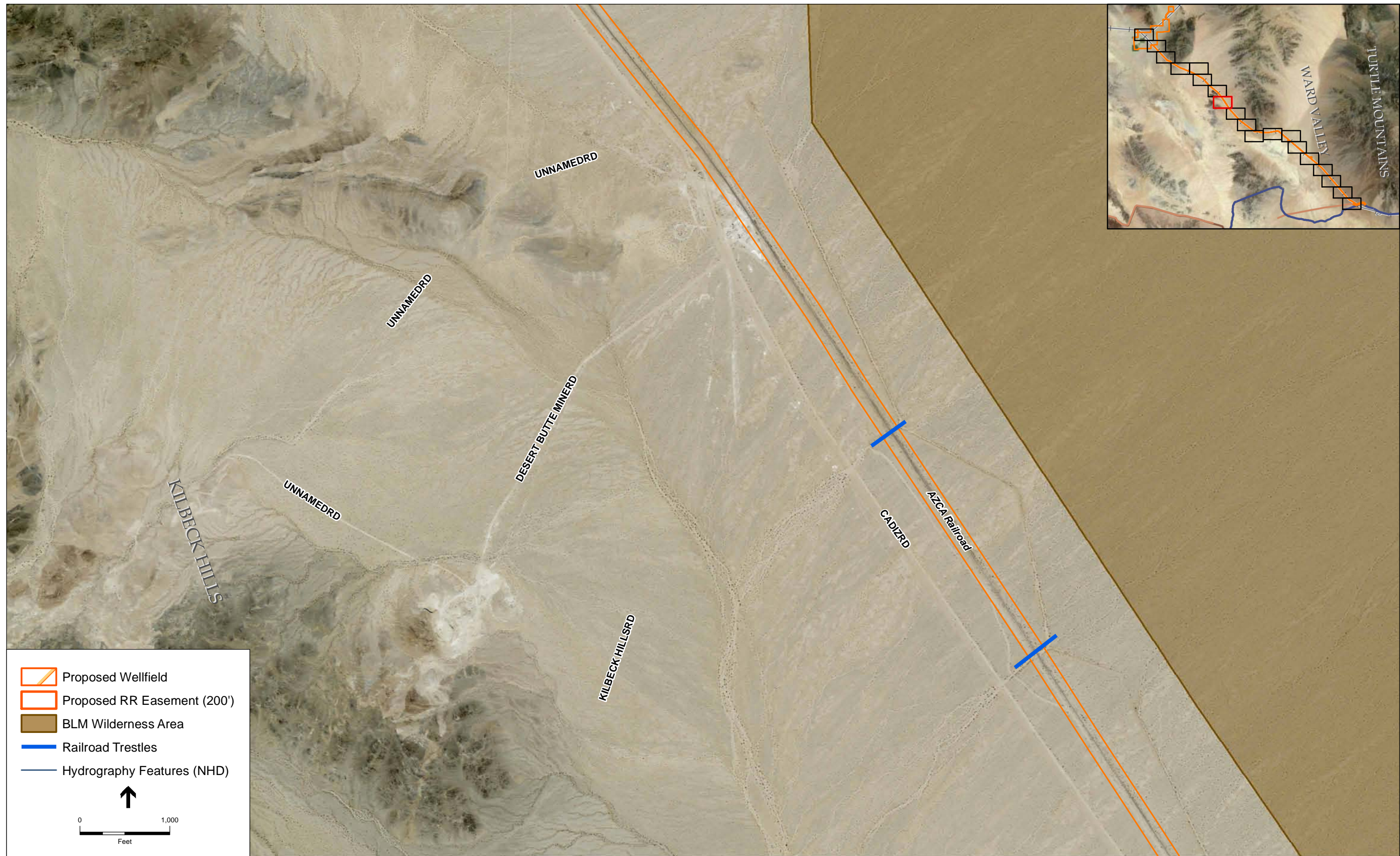
SOURCE: USDA, 2009; Geoscience Support Services, 2010, San Bernardino Co., 2010; Cadiz, Inc., 2010; and ESA, 2010









SOURCE: USDA, 2009; Geoscience Support Services, 2010, San Bernardino Co., 2010; Cadiz, Inc., 2010; and ESA, 2010



SOURCE: USDA, 2009; Geoscience Support Services, 2010, San Bernardino Co., 2010; Cadiz, Inc., 2010; and ESA, 2010



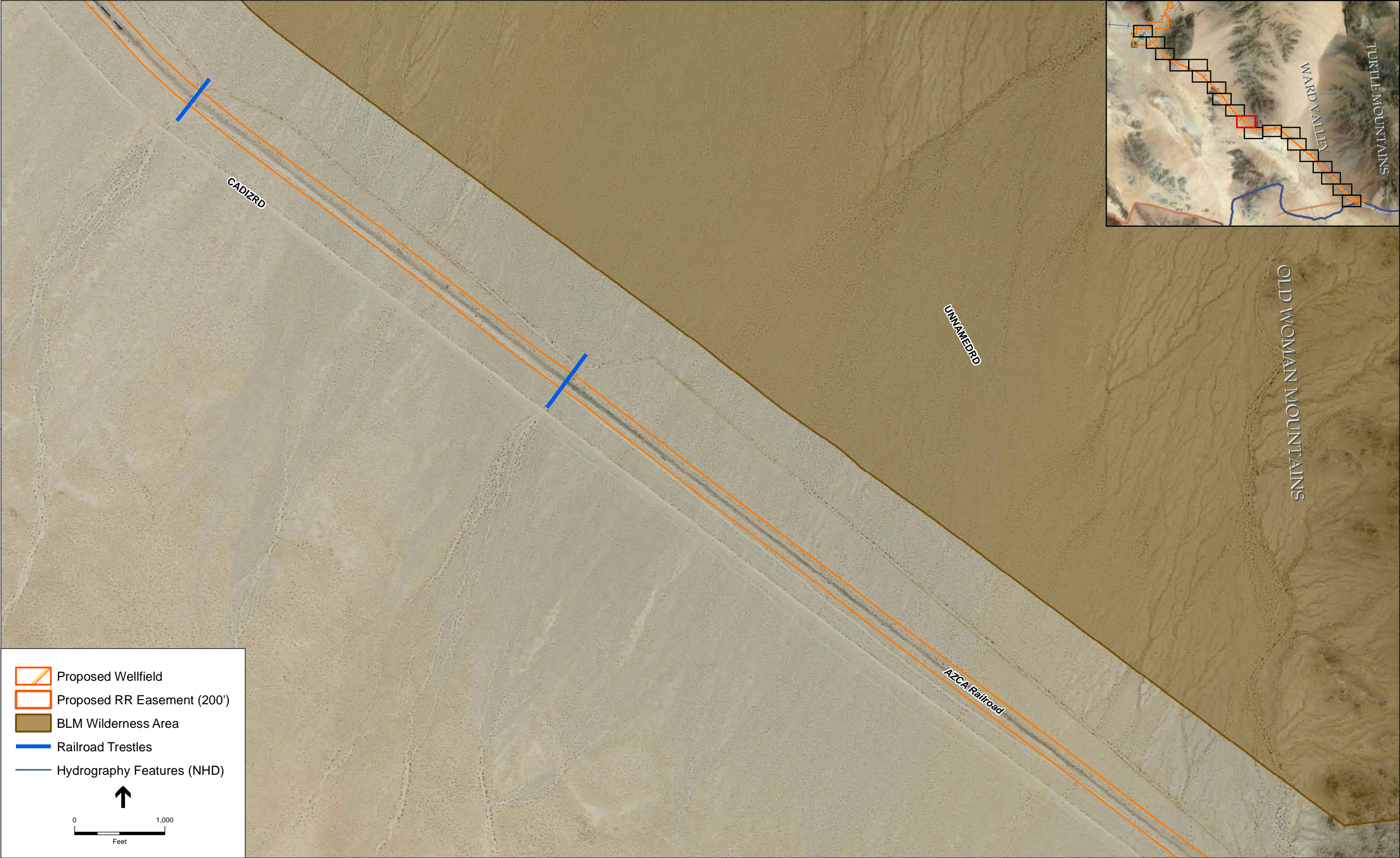
 Proposed Wellfield
 Proposed RR Easement (200')
 BLM Wilderness Area
 Railroad Trestles
 Hydrography Features (NHD)


 0 1,000
 Feet

SOURCE: USDA, 2009; Geoscience Support Services, 2010, San Bernardino Co., 2010; Cadiz, Inc., 2010; and ESA, 2010



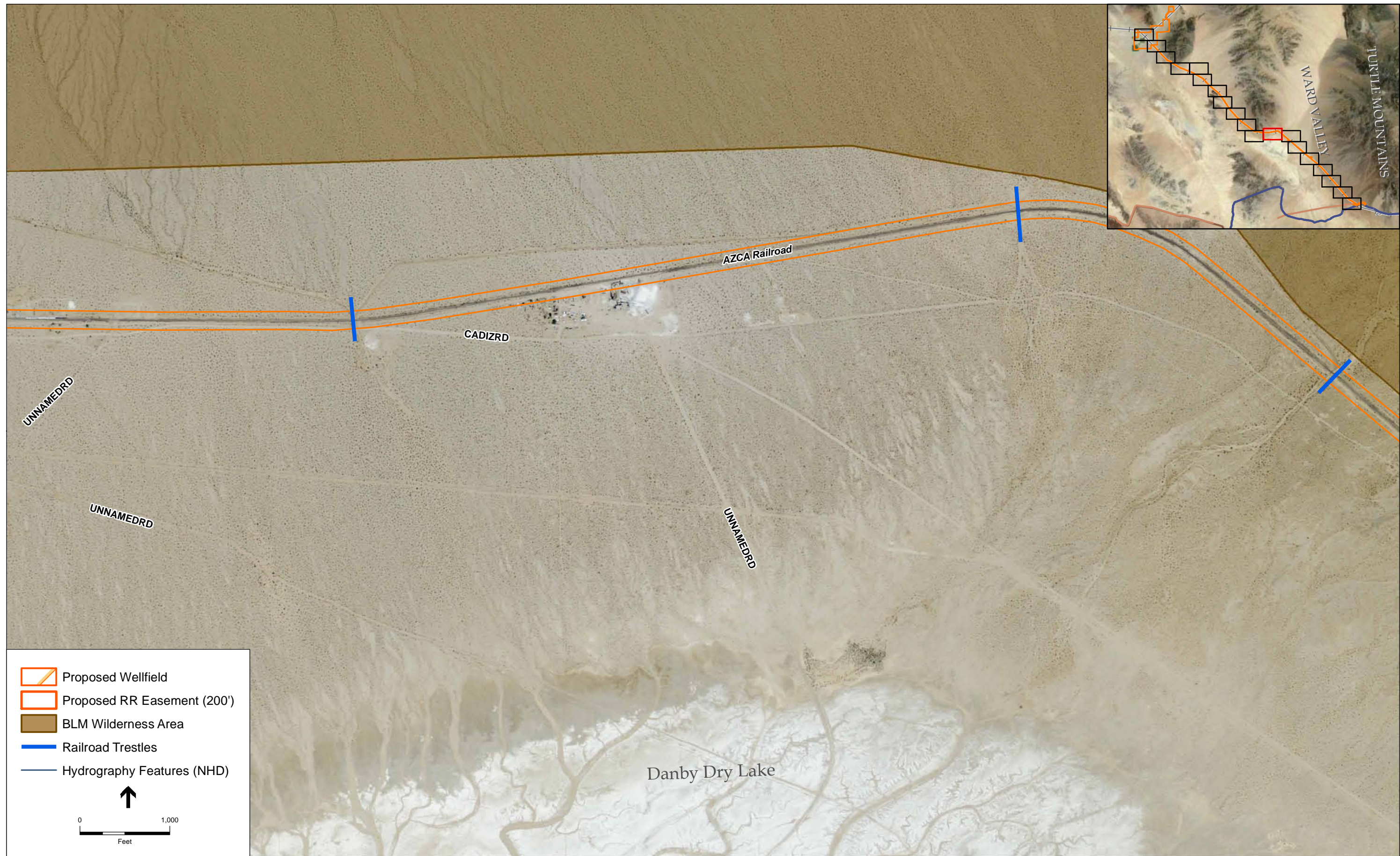
SOURCE: USDA, 2009; Geoscience Support Services, 2010, San Bernardino Co., 2010; Cadiz, Inc., 2010; and ESA, 2010



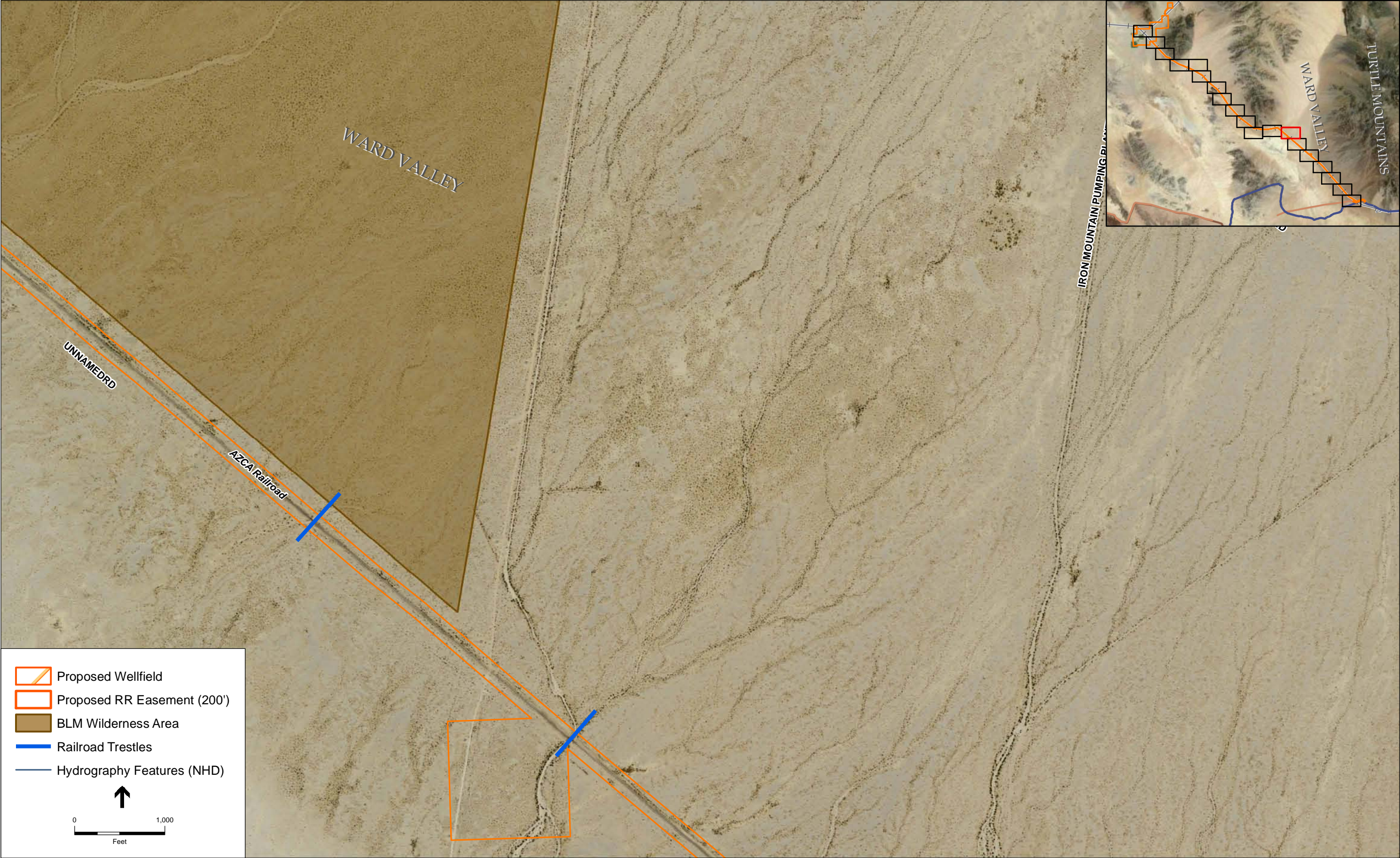
SOURCE: USDA, 2009; Geoscience Support Services, 2010, San Bernardino Co., 2010; Cadiz, Inc., 2010; and ESA, 2010



SOURCE: USDA, 2009; Geoscience Support Services, 2010, San Bernardino Co., 2010; Cadiz, Inc., 2010; and ESA, 2010

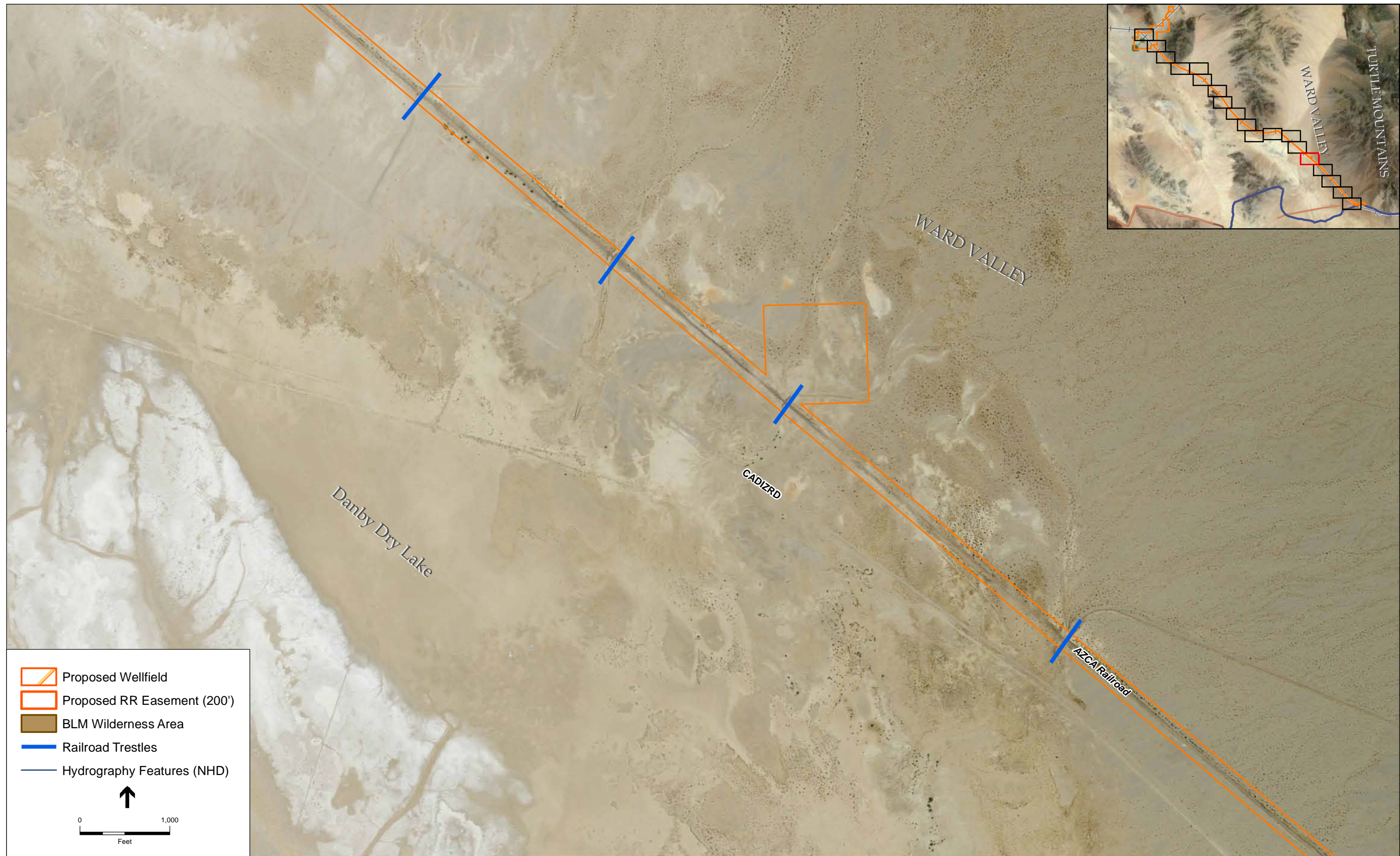


SOURCE: USDA, 2009; Geoscience Support Services, 2010, San Bernardino Co., 2010; Cadiz, Inc., 2010; and ESA, 2010

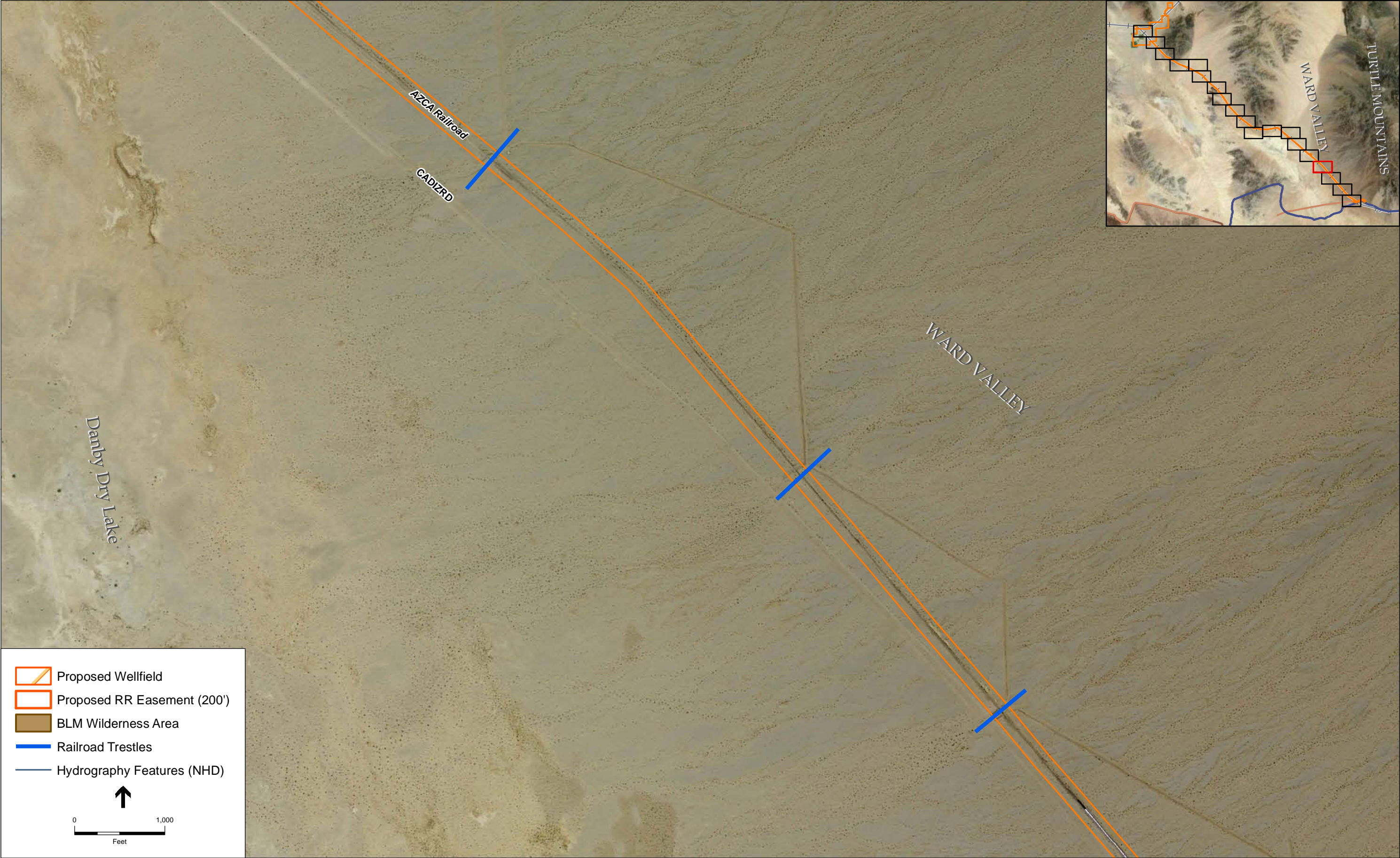




SOURCE: USDA, 2009; Geoscience Support Services, 2010, San Bernardino Co., 2010; Cadiz, Inc., 2010; and ESA, 2010



SOURCE: USDA, 2009; Geoscience Support Services, 2010, San Bernardino Co., 2010; Cadiz, Inc., 2010; and ESA, 2010



SOURCE: USDA, 2009; Geoscience Support Services, 2010, San Bernardino Co., 2010; Cadiz, Inc., 2010; and ESA, 2010



SOURCE: USDA, 2009; Geoscience Support Services, 2010, San Bernardino Co., 2010; Cadiz, Inc., 2010; and ESA, 2010



SOURCE: USDA, 2009; Geoscience Support Services, 2010, San Bernardino Co., 2010; Cadiz, Inc., 2010; and ESA, 2010



SOURCE: USDA, 2009; Geoscience Support Services, 2010, San Bernardino Co., 2010; Cadiz, Inc., 2010; and ESA, 2010