

Appendix O

Cultural Resources Survey Report – June 2012





626 Wilshire Boulevard
Suite 1100
Los Angeles, CA 90017-2934
213.599.4300 phone
213.599.4301 fax

www.esassoc.com

memorandum

date June 25, 2012

to Santa Margarita Water District

from ESA Cultural Resources, Candace Ehringer and Tom Barnes

subject Cultural Resources Survey Summary - June 2012

ESA conducted a cultural resources survey of the footprint of the proposed well pads, connector pipeline, and access roads, as well as CRA tie-in Options 2a and 2b, and proposed staging areas, between May 15 and June 2. The attached Figures 1 and 2 identify the survey footprint. The survey was conducted in transects of no greater than 15-20 meters. Visibility was generally good, ranging from 75 to 95 percent. Soil types varied somewhat, but consisted primarily of light grey sandy silt. The survey area included 200 feet on either side of the proposed 25-foot wide wellfield access roads and 10,000 square foot wellpad locations.

A total of 51 cultural resources were recorded or updated as a result of the surveys, including three previously recorded resources (Table 1). Forty-eight¹ new cultural resources were documented during the surveys, including 32 historic-period archaeological sites, nine prehistoric archaeological sites, two multi-component sites, and five isolated artifacts.

ESA is currently preparing a report that analyzes the sites and summarizes the findings. The report will be submitted to the San Bernardino County Museum in 2012. The report will identify which of the sites identified in the wellfield area are potentially eligible for inclusion in the federal register of historic places, and will recommend future actions to document the sites if any. The locations of potentially eligible sites and required buffers to ensure no impact will be provided to the project design team. The project design team will revise the pipeline route and well pad locations in the wellfield as necessary to ensure that all eligible sites are avoided to ensure less than significant impacts to cultural resources. Construction activities along the pipeline and staging areas may encounter eligible sites. In these areas, activities would be subject to Mitigation Measure CUL-4 to ensure that any impacts to potentially eligible sites are mitigated to less than significant levels.

¹ Site CAD-KRM-008-H may be divided into multiple sites pending further research.

TABLE 1: RECORDED CULTURAL RESOURCES

Trinomial (CA-SBR-)	Field Designation ^a	Description	Approx. Size	Comments
9855H	-	Historic site w/ features related to military training and can scatter	2.28 acres	Associated w/ military training exercises
9848	-	Prehistoric site w/ small lithic scatter	0.0009 acres	Resource remains as previously recorded
11586H	-	Historic road	N/A	Resource remains as previously recorded
-	CAD-CRE-001-I	Historic isolate – military helmet	N/A	Associated w/ military training exercises
-	CAD-CRE-002-M	Multi-component site with low-density lithic scatter and scattered historic debris	2.02 acres	Historic component associated w/ military training exercises
-	CAD-CRE-003-H	Large, low-density historic refuse scatter w/cans, glass bottles, and munitions	24.82 acres	Associated w/ military training exercises
-	CAD-CRE-004-P	Large prehistoric site with lithic scatter and ground stone	3.58 acres	-
-	CAD-CRE-005-H	Historic site w/ features related to military training and low-density can scatter	0.34 acres	Associated w/ military training exercises
-	CAD-CRE-006-H	Historic site w/ features related to military training and low-density can scatter	0.04 acres	Associated w/ military training exercises
-	CAD-CRE-007-H	Historic site w/ features related to military training and low-density can and glass bottle scatter	1.39 acres	Associated w/ military training exercises
-	CAD-CRE-008-H	Small, low-density historic debris scatter w/glass bottle fragments	2 acres	Association unknown
-	CAD-CRE-009-H	Historic site w/ cans, glass medicine bottles, and thermometer	0.05 acres	Association unknown

TABLE 1: RECORDED CULTURAL RESOURCES

Trinomial (CA-SBR-)	Field Designation ^a	Description	Approx. Size	Comments
-	CAD-CRE-010-H	Historic site w/ features related to military training and low-density can scatter	0.35 acres	Associated w/ military training exercises
-	CAD-CRE-011-H	Small, discrete deposit of cans and glass bottles	0.05 acres	Association unknown
-	CAD-CRE-012-H	Historic site w/ features related to welding and can scatter	0.5 acres	Associated with CRA
-	CAD-CRE-013-H	Small, discrete deposit of cans and glass bottles/jars	0.02 acres	Association unknown
-	CAD-CRE-014-H	Historic site w/ discrete deposit and sparse can scatter	0.07 acres	Association unknown
-	CAD-CRE-015-H	Small, discrete deposit of glass soda bottles	0.004 acres	Association unknown
-	CAD-CRE-016-H	Historic site w/ discrete refuse deposit and sparse can scatter	0.08 acres	Associated w/ military training exercises
-	CAD-CRE-017-H	Historic site w/ features related to military training and can scatter	3.21 acres	Associated w/ military training exercises
-	CAD-CRE-018-I	Prehistoric isolate – 2 ceramic fragments	N/A	-
-	CAD-BSM-001-P	Prehistoric lithic reduction locus	0.00009 acres	-
-	CAD-BSM-002-M	Multi-component site w/ features related to military training and can scatter, and two prehistoric artifacts	14.15 acres	Historic component associated w/ military training exercises
-	CAD-BSM-007-H	Historic site w/ features related to military training	12.71 acres	Associated w/ military training exercises
-	CAD-BSM-008-H	Historic site w/low-density can scatter	3.44 acres	Associated w/ military training exercises?

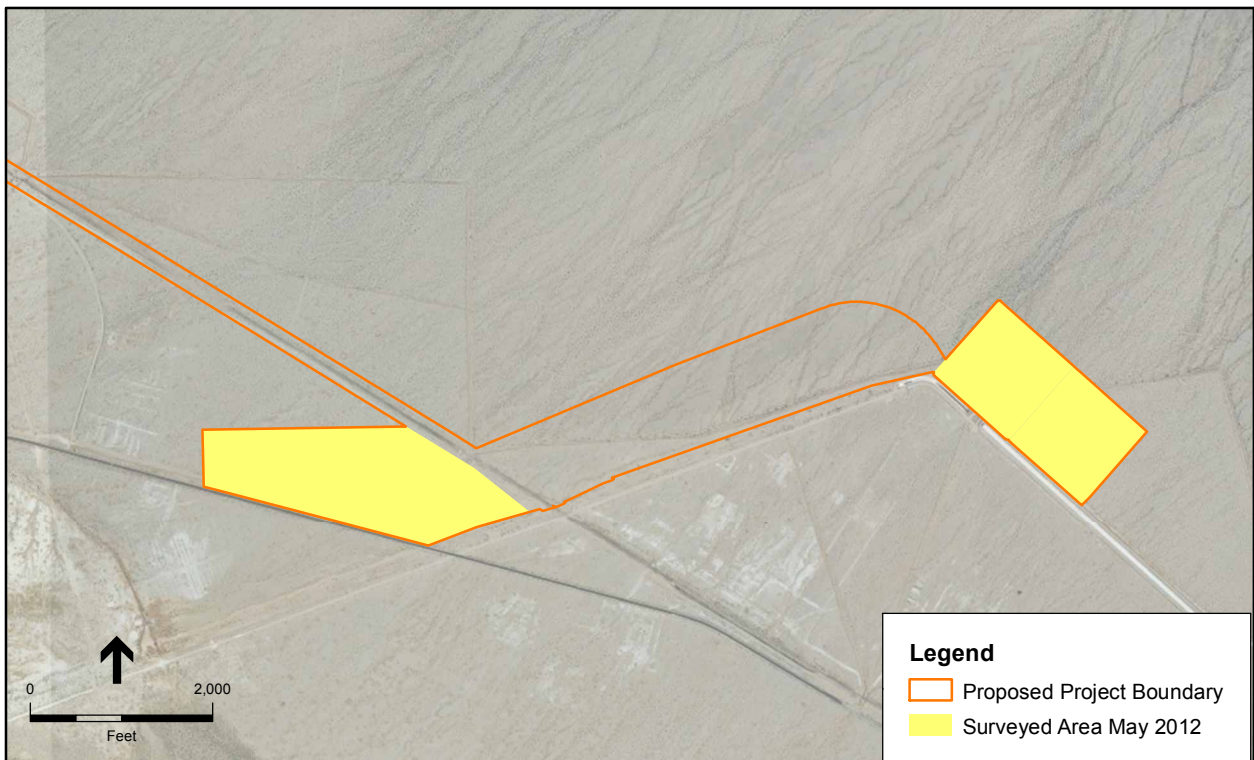
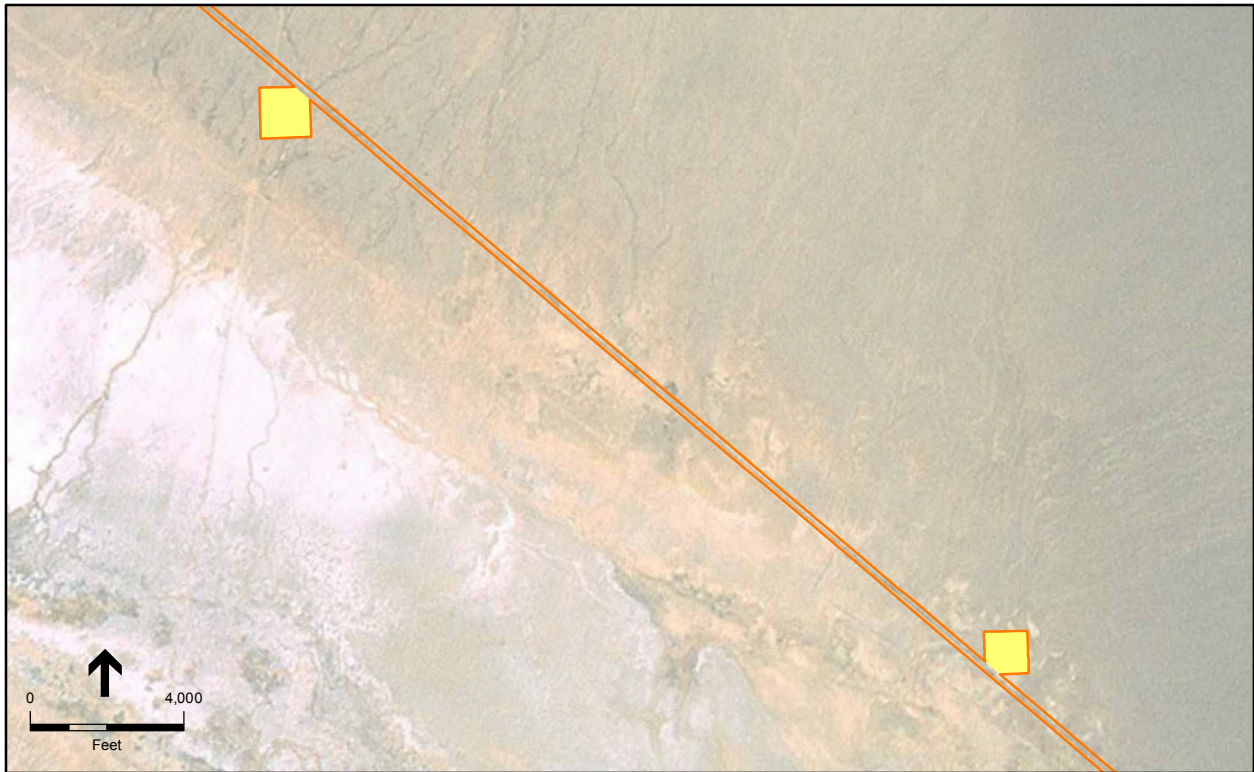
TABLE 1: RECORDED CULTURAL RESOURCES

Trinomial (CA-SBR-)	Field Designation ^a	Description	Approx. Size	Comments
-	CAD-BSM-009-H	Historic site w/low-density can scatter	0.05 acres	Associated w/ military training exercises?
-	CAD-BSM-010-P	Prehistoric site w/ low-density lithic scatter	0.02 acres	-
-	CAD-MTB-001-H	Historic site w/ features related to military training and low-density can scatter	0.01 acres	Associated w/ military training exercises
-	CAD-MTB-002-H	Historic site w/low-density can scatter	1.22 acres	Associated w/ military training exercises
-	CAD-MTB-003-H	Historic site w/low-density can scatter	0.07 acres	Associated w/ military training exercises
-	CAD-MTB-004-P	Prehistoric site w/moderate-to-high-density lithic scatter	0.41 acres	-
-	CAD-MTB-005-H	Historic site w/ can scatter	0.06 acres	Associated w/ military training exercises
-	CAD-MTB-006-H	Historic site w/ features related to military training and can scatter	0.81 acres	Associated w/ military training exercises
-	CAD-MTB-007-H	Historic site w/ discrete deposit and low-density can scatter	0.38 acres	Associated w/ military training exercises?
-	CAD-MTB-008-H	Historic site w/ can scatter	0.13 acres	Associated w/ military training exercises?
-	CAD-MTB-009-H	Circular rock ring (hearth)	0.0004 acres	Possibly modern
-	CAD-MTB-010-H	Historic site w/ can scatter	0.08 acres	Associated w/ military training exercises?
-	CAD-MTB-011-H	Historic site w/ cans and glass jar fragments	0.08 acres	Associated w/ military training exercises
-	CAD-MTB-013-H	Large low-density historic debris scatter	10.74 acres	Associated w/ ATSF RR-Parker Cutoff?
-	CAD-MTB-014-H	Small, low-density historic can scatter	0.01 acres	Associated w/ military training exercises

TABLE 1: RECORDED CULTURAL RESOURCES

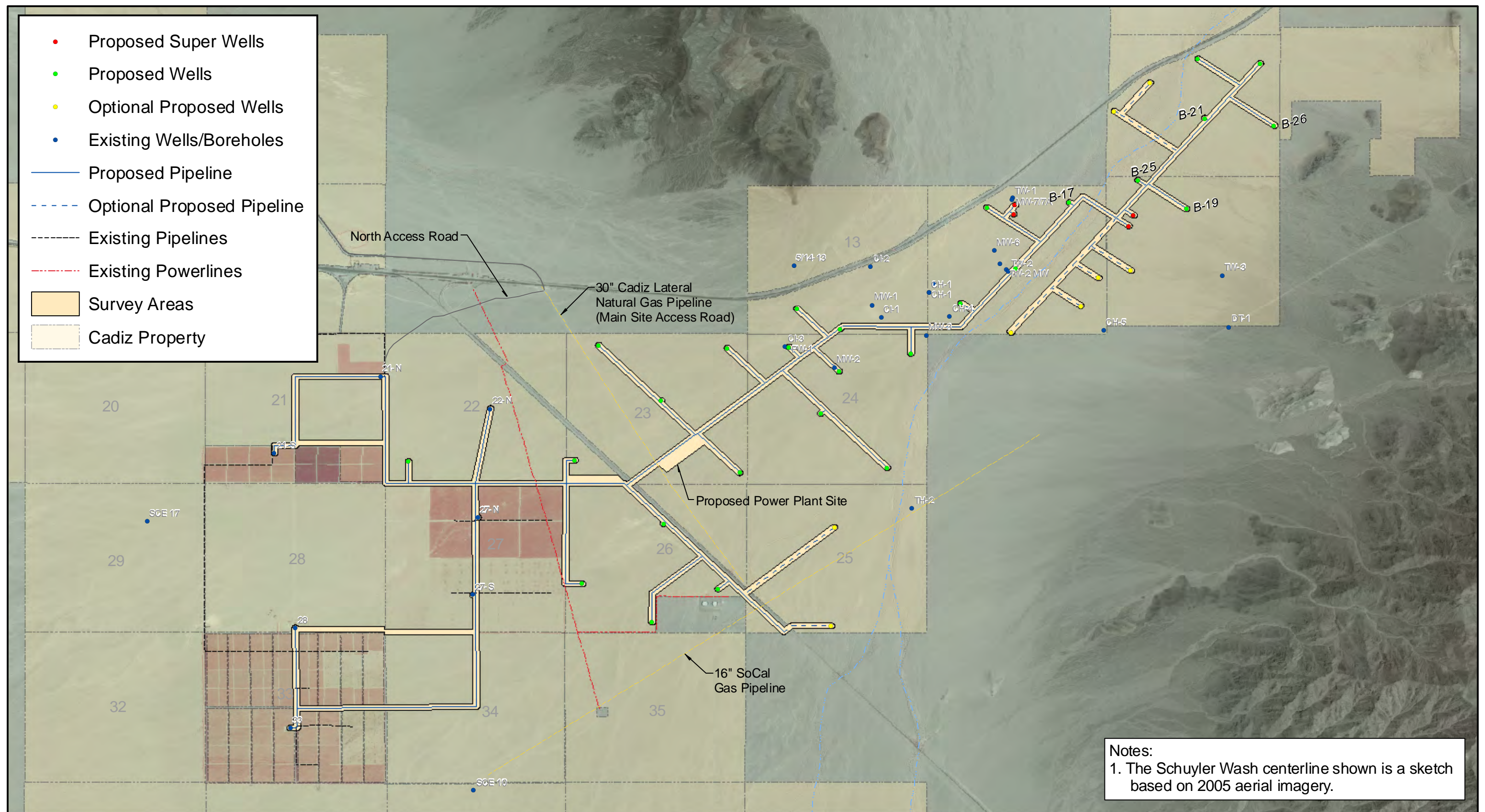
Trinomial (CA-SBR-)	Field Designation ^a	Description	Approx. Size	Comments
-	CAD-MTB-015-P	Prehistoric site w/ lithics and ground stone	TBD	-
-	CAD-KRM-001-H	Historic road segment	3,954 linear feet	Associated w/ CA-SBR-11586H?
-	CAD-KRM-002-H	Historic site w/ low-density debris scatter	0.05 acres	Associated w/ military training exercises
-	CAD-KRM-003-P	Prehistoric site w/moderate-to-low-density lithic scatter	2.35 acres	-
-	CAD-KRM-004-P	Prehistoric site w/moderate-to-low-density lithic scatter	0.61 acres	-
-	CAD-KRM-005-I	Prehistoric isolate – biface fragment	N/A	-
-	CAD-KRM-006-P	Prehistoric site w/low-density lithic scatter	0.02 acres	-
-	CAD-KRM-007-I	Prehistoric isolate – chert flake	N/A	-
-	CAD-KRM-008-H	Historic site w/glass insulators, wooden pole remnants, and metal brackets	TBD	Site may be divided into multiple sites pending further research
-	CAD-KRM-009-I	Prehistoric isolate – chert flake	N/A	-
-	CAD-KRM-010-P	Prehistoric site w/ small, low-density lithic scatter	0.009 acres	-

Appendix O Figure 1



SOURCE: ESA, 2012

Cadiz Valley Water Conservation, Recovery, and Storage Project
Surveyed Areas



Cadiz Survey Areas for Proposed Wells and Pipelines

Appendix O Figure 2

